

Cyl Tec®
Telemetry

CylConnect®
TALK TO YOUR TANK

Partnered with Palsa 



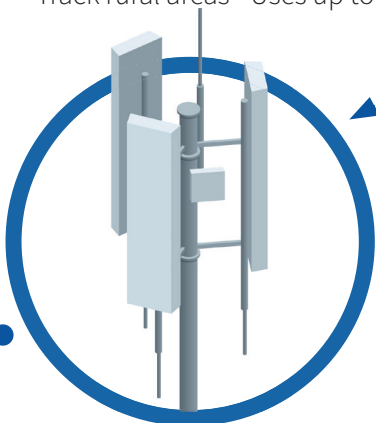
Assure constant gas supply and reduce distribution costs through remote monitoring by CylConnect®.

CylConnect® uses the cellular network to provide multiple monitoring solutions for your high pressure, cryogenic, or bulk tank systems.

FEATURES & BENEFITS

- Catch leaky tanks before they cause a problem
- Receive alerts instantly via mobile app or desktop
- Get stock-out forecasts ahead of time to avoid them
- Scan QR codes for instant entry & data retrieval
- Unlimited number of sensors with Bluetooth uplinks
- Track rural areas - Uses up to 4G LTE bandwidth

From your tank...



CylConnect®
TALK TO YOUR TANK

...to
YOU!



**REMOTE
MONITORING
SYSTEMS**

MULTIPLE APPLICATIONS

- Small Bulk & Large Bulk
- Carbonation Systems
- Liquid Cylinders
- High Pressure Cylinders
- Plus, custom solutions to meet your needs!

**SAVE up to
30%**
on distribution costs!

www.CylConnect.com

REMOTE MONITORING SYSTEMS CUSTOMIZED SOLUTIONS

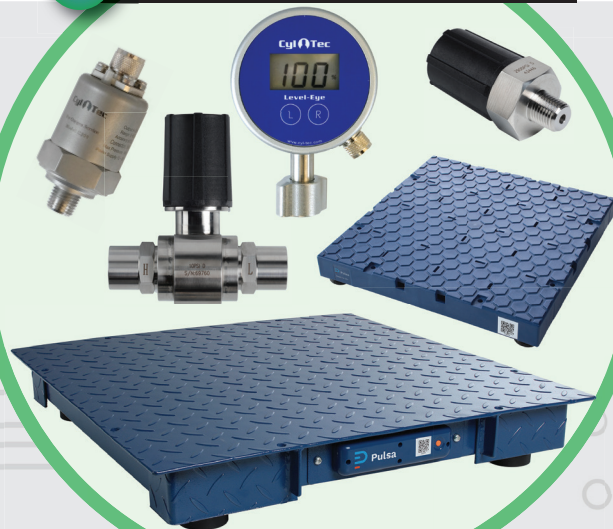
ASSURE CONSTANT GAS SUPPLY AND REDUCE DISTRIBUTION COSTS UP TO 30% THROUGH REMOTE MONITORING BY CYL-CONNECT®.

- 1** CylConnect® uses an **uplink device** to provide multiple monitoring solutions for high pressure, cryogenic, or bulk tank systems.
- 2** Various **sensors** monitor tank information such as liquid level, pressure, and weight, and send data via cell towers and GPS systems.
- 3** **CylConnect® software** displays and analyzes your tank's data on your mobile app or desktop.

1 UPLINK DEVICES



2 SENSORS



3 SOFTWARE



NO MORE GUESSING!

CALL US DIRECT 888-429-5832

www.cyl-tec.com

Cyl Tec®
One Resource. Zero Headaches.®

UPLINK DEVICES

"SMARTank" ST90 UPLINK DEVICE

- U.S.: AT&T LTE or Verizon LTE
- Mode: LTE Digital Wireless Radio with fallback to GSM/900MHz Wideband WLAN
- Enclosure: NEMA 4X; weatherproof, UL Approved (UL94V-0); CPVC
- GPS Receiver: Internal Antenna
- LAN/WAN: Wideband 900MHz, 300 ft. Line of Sight
- Accuracy: +/- 0.5% Full Scale of Range (BFST)
- Operating Temperature: 13° to 158°F (-25° to 70°C)
- Output Voltage: Nominally 14V/24V
- Output Current: Rated from 0-50mA



GW001 CELLULAR GATEWAY

- Auto selects to best network
- U.S.: 10+ carriers (incl. Verizon, AT&T, T-Mobile, Sprint)
- International: 400+ carriers in 150+ countries across all continents
- LTE Connectivity: 4G LTE Cat M1, NB-IoT
- GSM Connectivity: EGPRS
- Weatherproof enclosure
- Operating temperature: -13 to 167°F (-25 to 75°C)
- Power: AC/110-240V, DC 5V-12V
- 350-ft range
- Connects to unlimited number of sensors



SENSORS (FOR LIQUID LEVEL, PRESSURE, & WEIGHT)

LEVEL-EYE® & WAND

- Level-Eye Housing (Case): Aluminum
- Wand: 304 Stainless Steel (gas-wetted materials)
- O-Ring Seals: Teflon, Viton (gas-wetted materials)
- Operating Temp.: -40° to 175°F (-40° to 80°C)
- IP Rating: IP65
- Battery life: 2 yrs. (replaceable lithium-ion CR2477)
- Cleaned for Oxygen service



PRESSURE TRANSDUCER

- Range: 0-600 psi
- Max. Pressure: 1450 psi
- Output Signal: 4 - 20mA
- Bandwidth: (-3db): DC to 250 Hz
- Operating Temp.: -40° to 185°F (-40° to 85°C)
- IP Rating: IP66
- Cleaned for Oxygen service



PG001 PRESSURE SENSOR

- Gateway Connectivity: WiFi or cellular
- Pressure Range: 2900 psi
- Operating Temp.: -4° to 185°F (-20° to 85°C)
- 5-year battery life (replaceable CR2032)
- Cleaned for Oxygen service



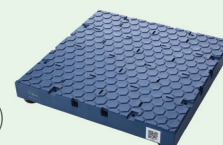
PG201 DIFFERENTIAL PRESSURE TRANSDUCER

- Gateway Connectivity: WiFi or cellular
- Liquid Level Measurement: 420 inches H₂O std.
- Differential Range: 0-15 psi std.
- Option: 840 inches H₂O / 30 psi available
- Operating Temp.: -20° to 165°F (-30° to 75°C)
- 5-year battery life (replaceable CR2032)
- Cleaned for Oxygen service



PW001 WEIGHT TILE

- Gateway Connectivity: WiFi or cellular
- 12 x 12 x 1.75 in.
- Operating Temp.: -5° to 130°F (-20° to 55°C)
- 5-year battery life (replaceable 3.6V)
- Supports up to 260 lb. (1 scale); or up to 400 lb (2 or more scales)
- Material: glass reinforced polypropylene



PI001 INDUSTRIAL SCALE

- Gateway Connectivity: WiFi or cellular
- 24 x 24 x 3 in. & 36 x 36 x 3 in.
- 1,500 lb. working load
- 5-year battery life (replaceable 3.6V)
- Material: powder coated steel
- Operating Temp.: -20° to 155°F (-30° to 70°C)
- Ramp accessory available



SOFTWARE



CylConnect® provides up-to-the-minute summaries of all your tracked products, including a predicted stock-out time using an advanced learning algorithm.

Refilling demands can change suddenly. But, with CylConnect's software, you can access your tank's telecommunication system anytime, anywhere, and know exactly what needs to be done next.

www.CylConnect.com

CylConnect® APPLICATIONS

TALK TO YOUR TANK

CylConnect® Remote Monitoring Systems are designed to track and monitor cylinders and bulk tanks using telecommunication devices that transfer specific data, such as liquid level, pressure, and/or weight right to your phone or computer.



CAPACITANCE

1. ST90 Uplink Device
2. Level-Eye® & Wand
3. Pressure Transducer



DIFFERENTIAL PRESSURE

1. GW001 Cellular Gateway
2. Differential Pressure Transducer
3. PG001 Pressure Sensor



WIRELESS INDUSTRIAL SCALE

1. GW001 Cellular Gateway
2. PI001 Industrial Scale (1,500 lb. working load)



WIRELESS WEIGHT TILE

1. GW001 Cellular Gateway
2. PW001 Weight Tile (up to 260 lb.)



WIRELESS PRESSURE

1. GW001 Cellular Gateway
2. PG001 Pressure Sensor

